



# K P P I

KEMENTERIAN  
PERDAGANGAN  
REPUBLIK INDONESIA

Komite Pengamanan Perdagangan Indonesia  
Jalan M. I. Ridwan Rais No. 5 Jakarta 10110 Telp. 021-3857758

**ANNOUNCEMENT  
INDONESIAN TRADE SAFETY COMMITTEE  
NUMBER 04/KPPI/PENG/04/2022**

**ABOUT**

**START OF INVESTIGATION OF EXTENSION OF SECURITY MEASURES  
TRADE (SAFEGUARD MEASURES) ON A SURPRISE TO AMOUNT  
IMPORT OF FABRIC PRODUCTS**

It is hereby notified that the Indonesian Trade Security Committee (KPPI) is investigating the extension of the Trade Safeguard Measure on the surge in the number of imports of Fabric products. The investigation was carried out on an official request from the Indonesian Textile Association (API) representing manufacturers of Fabric products submitted to KPPI on April 18, 2022. The applicant requested that KPPI conduct an extension investigation for the imposition of Trade Safeguard Measures for the surge in the number of imports of Fabric products, which includes 107 (one hundred and seven) Harmonized System numbers

(HS) 8 digits, namely: 5208.12.00, 5208.32.00, 5208.49.00, 5208.51.90, 5208.52.90, 5209.12.00, 5209.22.00, 5209.29.00, 5209.32.00, 5209.39.00, 5209.42.00, 5209.51.90, 5209.59.90, 5210.29.00, 5210.39.00, 5210.41.90, 5210.51.90, 5211.11.00, 5211.19.00, 5211.20.00, 5211.42.00, 5211.43.00, 5211.49.00, 5212.11.00, 5212.24.00, 5212.25.90, 5212.29.00, 5213.11.00, 5213.12.00, 5213.21.00, 5213.23.00, 5213.39.00, 5213.49.00, 5214.12.00, 5214.21.00, 5214.22.00, 5214.29.00, 5214.42.00, 5214.43.00, 5214.49.00, 5215.11.00, 5215.12.00, 5215.91.00, 5215.99.90, 5216.11.00, 5216.13.00, 5216.14.00, 5216.22.00, 5216.24.00, 5216.92.00, 5407.10.29, 5407.10.91, 5407.20.00, 5407.30.00, 5407.44.00, 5407.51.00, 5407.52.00, 5407.53.00, 5407.54.00, 5407.61.90, 5407.74.00, 5407.81.00, 5407.82.00, 5407.83.00, 5407.84.00, 5407.91.00, 5407.92.00, 5407.93.00, 5407.94.00, 5408.22.00, 5408.24.00, 5408.32.00, 5408.34.00, 5804.10.11, 5804.10.19, 5804.10.29, 5804.10.99, 5804.21.90, 5804.29.10, 5804.29.90, 5804.30.00, 5810.92.00, 6001.21.00, 6001.92.20, 6001.92.90, 6004.10.90, 6004.90.00, 6005.21.00, 6005.36.90, 6005.37.90, 6005.90.90, 6006.10.00, 6006.21.00, 6006.22.00, 6006.23.00, 6006.24.00, 6006.31.90, 6006.32.10, 6006.32.20, 6006.32.90, 6006.33.10, 6006.34.10, 6006.42.10, 6006.42.90, 6006.43.90, 6006.44.10, and 6006.44.90. The description and HS number are in accordance with the Indonesian Customs Tariff Book (BTKI) 2017. The reasons for the Petitioner requesting protection are that they are still experiencing Serious Loss or Threat of Serious Loss, the increase in the number of imports of Fabric products, and the need for additional time to complete the structural adjustment program that has been implemented, promised in advance optimally.

After conducting research on the application in question, KPPI obtained preliminary evidence indicating a surge in the number of imports of Fabric products and the occurrence of Serious Losses or Threats of Serious Losses experienced by the Petitioners.

In connection with this and based on the Government Regulation of the Republic of Indonesia Number 34 of 2011 concerning Antidumping Measures, Compensation Measures and Trade Safeguard Measures, the KPPI stipulates the commencement of an investigation into the extension of the imposition of Safeguard Measures on the surge in the number of imports of Fabric products since the date of this Announcement.

Parties who have an interest in this investigation are given the opportunity to register themselves as interested parties no later than 15 (fifteen) days from the date of this announcement and submit it to:

**INDONESIAN TRADE SAFETY COMMITTEE  
MINISTRY OF TRADE**

JL. M. I. Ridwan Rais No. 5, Building I-Floor 5, Jakarta 10110  
Telp / Fax: (021) 3857758 E-mail: kppl@kemendag.go.id

Jakarta, April 25, 2022

Chief

TTO

Mardjoko

**PRELIMINARY EVIDENCE OF RESEARCH APPLICATION  
IN FRAMEWORK  
EXTENSION OF SAFETY MEASURES  
TRADE ON THE IMPORT OF GOODS**

**KAIN**

**WITH *HARMONIZED SYSTEM* (HS) NUMBER  
BASED ON INDONESIAN CUSTOMS RATE BOOK 2017:**

5208.12.00, 5208.32.00, 5208.49.00, 5208.51.90, 5208.52.90, 5209.12.00,  
5209.22.00, 5209.29.00, 5209.32.00, 5209.39.00, 5209.42.00, 5209.51.90,  
5209.59.90, 5210.29.00, 5210.39.00, 5210.41.90, 5210.51.90, 5211.11.00,  
5211.19.00, 5211.20.00, 5211.42.00, 5211.43.00, 5211.49.00, 5212.11.00,  
5212.24.00, 5212.25.90, 5512.29.00, 5513.11.00, 5513.12.00, 5513.21.00,  
5513.23.00, 5513.39.00, 5513.49.00, 5514.12.00, 5514.21.00, 5514.22.00,  
5514.29.00, 5514.42.00, 5514.43.00, 5514.49.00, 5515.11.00, 5515.12.00,  
5515.91.00, 5515.99.90, 5516.11.00, 5516.13.00, 5516.14.00, 5516.22.00,  
5516.24.00, 5516.92.00, 5407.10.29, 5407.10.91, 5407.20.00, 5407.30.00,  
5407.44.00, 5407.51.00, 5407.52.00, 5407.53.00, 5407.54.00, 5407.61.90,  
5407.74.00, 5407.81.00, 5407.82.00, 5407.83.00, 5407.84.00, 5407.91.00,  
5407.92.00, 5407.93.00, 5407.94.00, 5408.22.00, 5408.24.00, 5408.32.00,  
5408.34.00, 5804.10.11, 5804.10.19, 5804.10.29, 5804.10.99, 5804.21.90,  
5804.29.10, 5804.29.90, 5804.30.00, 5810.92.00, 6001.21.00, 6001.92.20,  
6001.92.90, 6004.10.90, 6004.90.00, 6005.21.00, 6005.36.90, 6005.37.90,  
6005.90.90, 6006.10.00, 6006.21.00, 6006.22.00, 6006.23.00, 6006.24.00,  
6006.31.90, 6006.32.10, 6006.32.20, 6006.32.90, 6006.33.10, 6006.34.10,  
6006.42.10, 6006.42.90, 6006.43.90, 6006.44.10, and 6006.44.90

**NOT SECRET**

**DELIVERED BY  
INDONESIA TEXTILE ASSOCIATION  
(API)  
YEAR 2022**

## A. GENERAL

Due to the end of the implementation of the Trade Safeguard Measures (*Safeguard Measures*) based on the Regulation of the Minister of Finance (PMK) No.78/PMK.010/2021 concerning Amendments to the Regulation of the Minister of Finance Number 55/PMK.010/2020 concerning Imposition of Safeguard Measures Import Duty (BMTP) on the Import of Fabric Products, and considering that there are still many similar imported products that have an impact to delays in the recovery of serious losses and affects the optimal implementation of structural adjustments in an effort to increase competitiveness with similar imported products.

In this case, the Indonesian Textile Association or abbreviated as API, hereinafter referred to as the Applicant, represents 64 (sixty four) API member companies as Industry Domestic fabric producer (IDN), hereby submits a Request for Investigation Extended *Safeguard Measures* to the Committee Indonesian Trade Security (KPPI) in order to apply the extension imposition of Trade Security Measures in the form of BMTP on the import of fabric goods. To support the application that we submitted, complete preliminary evidence has been compiled application for an extension of the investigation and supported by documents that required in accordance with the provisions of Government Regulation no. 34 of 2011 concerning Actions Antidumping, Compensation Measures, Trade Safeguard Measures and Decree of the Minister of Industry and Trade of the Republic of Indonesia No. 85 of 2003 concerning Procedures and Requirements for Requests for Investigation of Domestic Industry Security (IDN) due to a surge in imports.

## B. APPLICANT

Name : Indonesian Textile Association (API), representing 64 (sixty four)  
API member company as IDN

Address : Graha Surveyor Indonesia Lt. 16  
Jl. Gatot Subroto Kav. 56, South Jakarta

Telp./Faks. : 021-5272171 / 5272166

E-mail : sekretariat@bpnapi.org

Website

Contact Person : Jemmy Kartiwa Sastraatmadja

Department : General Manager of API

The list of names of companies represented by the Petitioners in this application for investigation of this extension are as follows:

**Table 1. List of Company Names Represented by the Applicant**

No	Segment of the Items Investigated 1.	Company name
	<b>Woven Fabrics from Cotton</b>	1. PT. Adetex 2. PT. Argo Pantes 3. PT. Badjatex 4. PT. Bina Nusantara Prima 5. PT. Dan Liris 6. CV. Dulangmas 7. PT. Delta Merlin Dunia Textile 8. PT. Dunia Setia Clothing 9. PT. Garuda Mas Semesta 10. PT. Grandtex 11. PT. Mulia Megah Mandiri 12. PT. Nagamas Kurnia Sejahtera 13. PT. Nagasaki Kurnia Textile Mills 14. PT. Niaga Kurnia Textile 15. PT. Primiissima
<b>2.</b>	<b>Woven Fabrics from Synthetic and Artificial Staple Fibers</b>	1. PT. Adetex 2. PT. Bina Nusantara Prima 3. PT. Dan Lyrical 4. PT. Delta Merlin Dunia Textile 5. PT. Djohartex 6. PT. Clothing Personnel (Fabric)  7. PT. Inti Daya Mandiri 8. PT. Mulia Megah Mandiri 9. PT. Nagasaki Kurnia Textile Mills 10. PT. Panca Mitra Sandang Indah 11. PT. Putera Mulya Terang Indah 12. CV. Purnama Tirtatex 13. PT. Happy Kharisma Textile 14. PT. Surya Mandiri Business
<b>3.</b>	<b>Woven Fabric from Yarn Synthetic and Artificial Filaments</b>	1. PT. Adetex 2. PT. Alena Textile Industry 3. PT. Aswindo Jaya Sentosa 4. PT. Ayoe Indotama Textile 5. PT. Bentara Sinar Prima 6. PT. Bina Nusantara Prima 7. CV. Dulangmas 8. PT. Eiffel Textile 9. PT. Ever Shine Textile, Tbk.  10. PT. Filamenindo Lestari Textile 11. PT. Gistex Textile Indonesia 12. PT. Hegar Mulya 13. PT. Idol of Eternal Harmony 14. PT. Laju Citra Lestari 15. PT. Mahameru Centratama 16. PT. Maju Aman Sentosa Textile 17. PT. Mulia Megah Mandiri 18. PT. Nagasaki Kurnia Textile Mills 19. PT. Panca Mitra Sandang Indah 20. PT. Putera Mulya Terang Indah 21. PT. Sinar Pelita Terang Indah 22. PT. Sinar Sari Sejati 23. PT. Sipatex Putri Lestari

		24. PT. Surya Mandiri Business 25. CV. Sungai Indah 26. CV. Suritex 27. PT. Yogyakarta Textile
4.	Special Woven Fabrics and Embroidery	1. PT. Beautiful Hexatex 2. PT. Kewalram 3. PT. Beautiful Mayer 4. PT. Sinar Pangjaya Mulia 5. PT. The Light of the Textile Cadets 6. PT. Wiska
5.	Knitted Fabric	1. PT. Anggana Kurnia Putra 2. PT. Orchid Mas 3. PT. Come on Indotama Textile 4. PT. Center TexIndo 5. PT. Two Companions 6. PT. Ever Shine Textile, Tbk. 7. PT. Graha Surya Angkasa 8. PT. Gunajaya Sentosa 9. PT. Kurnia's Hope 10. PT. Eternal Harmonious Idol 11. PT. Kamarga Kurnia Textile 12. PT. Brilliant Build Partner 13. PT. Dragon Son of Suteramas 14. PT. Sentosa Eternal Nirvana 15. PT. Safilindo Permata 16. PT. More Noble Means 17. PT. Sinar Pangjaya 18. PT. Independent Success Rays 19. PT. Sipatex 20. PT. Eternal Soljer

Source: Applicant

## C. PROPORTION OF PRODUCTION OF THE APPLICANT

Table 2. Total Production and Proportion of Production in 2021

DESCRIPTION	PROPORTION (%)
Applicant Production	52,35
Non-Applicant Production	47,65
National Production	100

Source: Data of Association Members and Applicants

The total production of the Applicant in 2021 is **52.35%** of the total national production.

This is in accordance with the provisions of Government Regulation (PP) No. 34 of 2011 concerning Anti-Dumping Measures, Subsidy Measures, and Trade Safeguard Measures Chapter I

Article 1 paragraph 18, where the Petitioner's production is a large proportion of the total the production of the said goods so that they meet the requirements as IDN in the case of Actions Security.

## **D. GOODS APPLICATION FOR AN EXTENSION INVESTIGATION**

### **1. Item Description**

The goods for which the application for an extension investigation is submitted are Cloth, with grouping of goods segment and No. HS according to the Customs Tariff Book Indonesia (BTKI) in 2017 as follows:

#### **a. Woven Fabric from Cotton**

HS. 5208.12.00, 5208.32.00, 5208.49.00, 5208.51.90, 5208.52.90, 5209.12.00, 5209.22.00, 5209.29.00, 5209.32.00, 5209.39.00, 5209.42.00, 5209.51.90, 5209.59.90, 5210.29.00, 5210.39.00, 5210.41.90, 5210.51.90, 5211.11.00, 5211.19.00, 5211.20.00, 5211.42.00, 5211.43.00, 5211.49.00, 5212.11.00, 5212.24.00, and 5212.25.90.

#### **b. Woven Fabrics from Synthetic and Artificial Staple Fibers**

HS. 5512.29.00, 5513.11.00, 5513.12.00, 5513.21.00, 5513.23.00, 5513.39.00, 5513.49.00, 5514.12.00, 5514.21.00, 5514.22.00, 5514.29.00, 5514.42.00, 5514.43.00, 5514.49.00, 5515.11.00, 5515.12.00, 5515.91.00, 5515.99.90, 5516.11.00, 5516.13.00, 5516.14.00, 5516.22.00, 5516.24.00, and 5516.92.00.

#### **c. Woven Fabrics from Synthetic and Artificial Filament Yarn**

HS. 5407.10.29, 5407.10.91, 5407.20.00, 5407.30.00, 5407.44.00, 5407.51.00, 5407.52.00, 5407.53.00, 5407.54.00, 5407.61.90, 5407.74.00, 5407.81.00, 5407.82.00, 5407.83.00, 5407.84.00, 5407.91.00, 5407.92.00, 5407.93.00, 5407.94.00, 5408.22.00, 5408.24.00, 5408.32.00, and 5408.34.00.

#### **d. Special Woven Fabrics and Embroidery**

HS. 5804.10.11, 5804.10.19, 5804.10.29, 5804.10.99, 5804.21.90, 5804.29.10, 5804.29.90, 5804.30.00, and 5810.92.00.

#### **e. Knitted Fabric**

HS. 6001.21.00, 6001.92.20, 6001.92.90, 6004.10.90, 6004.90.00, 6005.21.00, 6005.36.90, 6005.37.90, 6005.90.90, 6006.10.00, 6006.21.00, 6006.22.00, 6006.23.00, 6006.24.00, 6006.31.90, 6006.32.10, 6006.32.20, 6006.32.90, 6006.33.10, 6006.34.10, 6006.42.10, 6006.42.90, 6006.43.90, 6006.44.10, and 6006.44.90.

### **2. The Product Segment of the Applicant:**

#### **a. Woven Fabric from Cotton**

It is a type of fabric made from cotton fiber. This type of fabric is mostly used for this type of clothing. The fiber used for

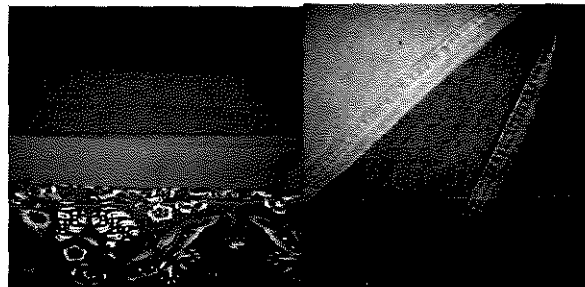
The cotton fabric here is a natural fiber, has *Hypo Allergenic* and does not contain chemicals.

**Identification of Woven Fabrics from Cotton:**

Fabrics have hollow fibers so that when used as clothing, leather will be easy to breathe. This type of fabric is very suitable when worn in an area tropical climate, including Indonesia. This type of fabric has excellent water absorption and excellent sweat absorption.

**Physical Characteristics:**

- Has water absorption
- The texture is smooth and soft when touched by the skin, does not cause skin irritation, and comfortable when used
- Various thickness diameters
- Easily wrinkled when worn
- Not easy to tear
- Does not easily fade or change color
- Consists of various motifs, various colors, and various weaves



**Figure 1. Woven Fabric from Cotton**

**Raw material:**

The raw materials used by the Petitioners to produce woven fabrics from cotton are yarns of various colors or raw white/greige benang containing cotton or other blends of man-made fibers.

**Uses:**

The use of woven fabrics from cotton is generally used to produce clothing and canvas fabrics

**Standardization:**

Standards used by the Applicant to produce and technically test woven fabrics of cotton according to the international standard OEKO-TEX.

**b. Woven Fabrics from Synthetic and Artificial Staple Fibers**

It is a type of fabric made from staple thread. staple thread

is a yarn made from staple fibres. In general, staple threads originate from from man-made fibers, but some are derived from natural fibers. staple thread derived from man-made fibers such as polyester staple fiber, acrylic or modacrylic, cotton, rayon/viscose or a mixture thereof.

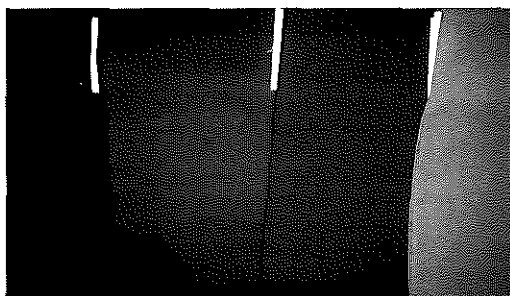
**Identification of Woven Fabrics from Synthetic and Artificial Staple Fibers:**

Woven Fabrics from Synthetic and Artificial Staple Fibers, according to the characteristics of the material

The raw materials are polyester and artificial.

**Physical Characteristics:**

- Synthetic fabrics do not absorb water and heat when used
- Artificial fabrics are easy to absorb water and do not get hot when used
- Multicolored
- Has a motive
- Soft or rough texture
- No stretch



**Figure 2. Woven Fabrics from Synthetic and Artificial Staple Fibers**

**Raw material:**

The raw materials used by the Applicant to produce woven fabrics from synthetic and artificial staple fibers are yarns containing *staple fibers of polyester, viscose, cotton, etc., or a mixture thereof.*

**Uses:**

The use of woven fabrics from synthetic and artificial staple fibers produced by the Applicant is as a raw material for manufacturing apparel and other textile finished products.

**Standardization:**

Standards used by the Applicant for production and technical testing woven fabrics of synthetic and artificial staple fibers according to standards international OEKO-TEX and ISO 9001:2015.



### **c. Woven Fabrics from Synthetic and Artificial Filament Yarn**

Is one type of fabric made of filament yarn. Thread

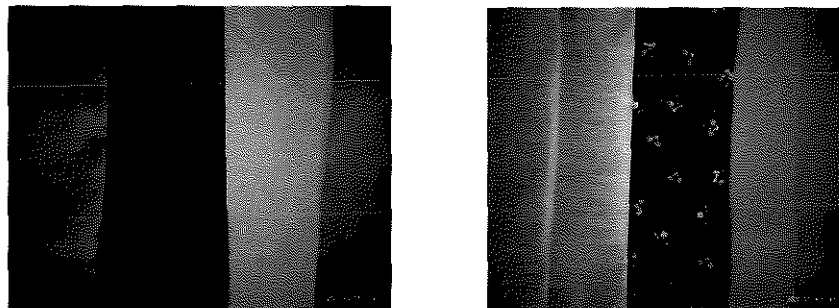
Filaments are threads made from filament fibers. In general, filament yarn derived from man-made fibers, but some are derived from natural fibers. Example filament yarn derived from natural fibers, namely: silk thread. filament yarn derived from man-made fibers, namely rayon fiber and polyester fiber

#### **Identification of Woven Fabrics from Synthetic and Artificial Filament Yarns:**

Woven Fabrics from Synthetic and Artificial Filament Yarn. woven fabric properties filament follows the nature of the raw material (yarn) filament. Filaments are very very long fibers. Artificial fiber is an example of a filament, the length of which is produced according to the wishes of the maker. The only natural fibers in the form of filaments are silk fibers.

#### **Physical Characteristics:**

- Synthetic fabrics do not absorb water and heat when used
- Artificial fabrics are easy to absorb water and do not get hot when used
- Not easy to tear and not easy to wrinkle
- No stretch
- Soft or rough texture
- Various colors and have motifs



**Figure 3. Woven Fabrics from Synthetic and Artificial Filament Yarn**

#### **Raw material:**

The raw materials used by the Applicant to produce woven fabrics from synthetic and artificial filament yarns are filament yarns with artificial, synthetic or mixed fiber content.

#### **Uses:**

Uses of fabrics woven from synthetic and artificial filament yarns generally produced by the Applicant as raw material for manufacture of apparel and other textile finished products. Besides that, you can used for the manufacture of tires, tarpaulins, and *conveyor ducts*.

**Standardization:**

Standards used by the Applicant for production and technical testing woven fabrics of synthetic and artificial filament yarns refer to OEKO-TEX international standard.

**d. Special Woven Fabrics and Embroidery**

Is one type of woven fabric that is given Embroidery or embroidery is decorations made on fabric or other materials with sewing needles and thread. In addition to thread, decoration for embroidery or embroidery can use materials such as scrap metal, pearls, beads, feathers, and sequins.

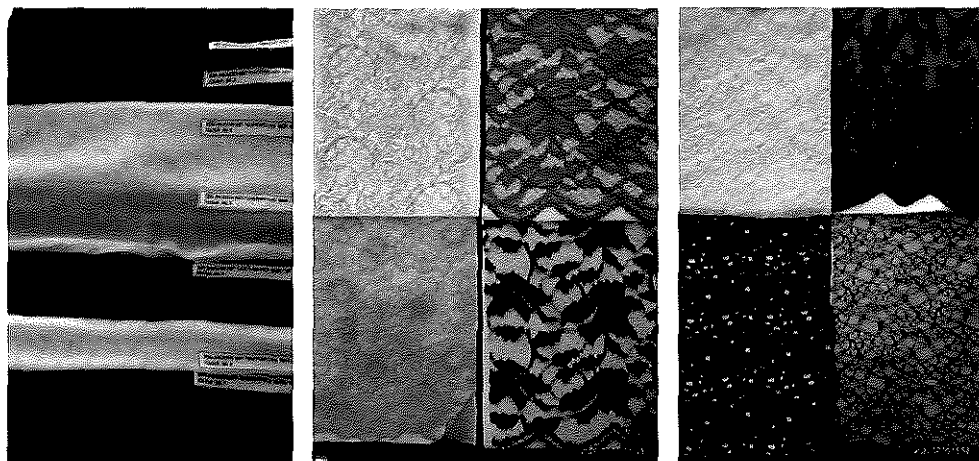
**Identification of Special Woven and Embroidered Fabrics:**

Custom Woven and Embroidered Fabrics. The nature of the fabric tends to stretch more than the fabric and has a rough or soft texture. Embroidery or commonly called

Embroidery is a decoration made on the surface of a cloth or with other materials others such as (metal, beads, sequins, pearls etc.) with sewing thread and needle.

**Physical Characteristics:**

- The fabric has a mesh shape and is transparent
- The fabric consists of a coarse texture and a soft texture
- Stretch fabric properties
- Has a variety of patterns
- Various colors



**Figure 4. Custom Woven Fabrics and Embroidery**

**Raw material:**

The raw materials used by the Applicant to produce woven fabrics special and embroidery are threads of various colors or raw threads

*white/greige* and contains nylon, rayon, polyester, metallic, elastane, silk, cotton, and wool.

**Uses:**

Uses of special woven fabrics and embroidery in general

used to produce kebaya, underwear, clothing

traditional wedding dress, casual dress, Muslim dress, party dress, children's dress, decoration materials, veils/hijabs, mukena, gift wrapping, mosquito nets, curtains and shoe/footwear material

**Standardization:**

Standards used by the Applicant for production and technical testing

special woven and embroidered fabrics according to international standards  
OEKO-TEX

**e. Kain Rajut**

Knitted fabrics are fabrics that are made by crossing two rows threads that are perpendicular to each other, knitting only one thread where rows of threads in the form of loops (circles or arches) are commonly used as a link between threads. Knitting in English is called 'knitting'. Knitting can be done in two ways, namely by hand and by using a machine. Some examples of knitted fabrics that are knitted by machine are *jersey fabric, mesh, berber, felt, towel*.

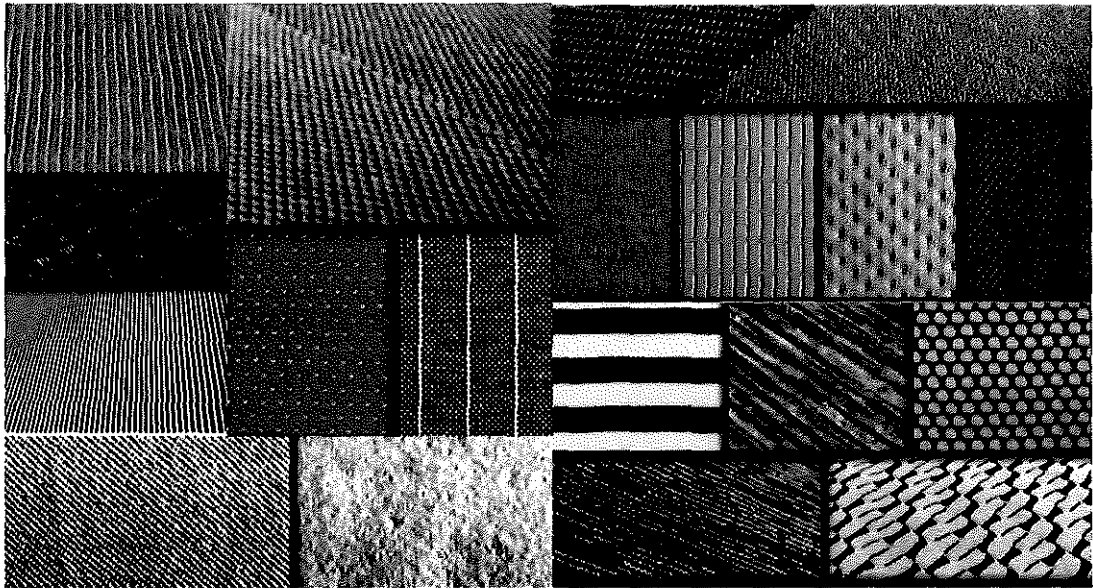
**Knitting Fabric Identification:**

The elasticity of knitted fabrics is higher than that of woven fabrics. Knitting fabric can be easy stretch, this is due to loops in the fibers. Not only that, its elasticity also allows the wearer to move more freely and comfortably.

Another advantage of knitted fabrics is that they do not wrinkle easily during use, packing, or storage. However, knitting has a higher potential for shrinkage compared to woven fabrics. Knitted fabrics include jersey, berber, mesh, towel, felt and fleece. Woven fabrics include linen, twill, denim, satin, chiffon, corduroy, tweed and canvas. There are two main industrial categories of knitting machines: Warp Knitting and Weft Knitting. Knit the warp/warp direction where the loops are positioned in the vertical direction, while the loops are knitted in the weft direction. has a horizontal position. Weft direction knitting is the most common type of the art of knitting.

**Physical Characteristics:**

- Elastic/stretched & flexible
- Not easily tangled
- Easily shrinks
- Soft texture and comfortable on the skin
- Multicolored
- Has a motive



**Figure 5. Knitting Fabric**

**Raw material:**

The raw materials used by the Applicant to produce knitted fabrics is a multicolored thread or *greige* thread containing rubber thread and fibers including artificial, synthetic, or cotton.

**Uses:**

The use of knitted fabrics is generally used to produce rolls, pants, jackets, sweaters, t-shirts, skirts, cardigans, towels, gloves and hats.

**Standardization:**

The standardization used by the applicant to produce knitted fabrics refers to international standards, namely ISO 9001: 2015 and OEKOTEX.

**3. Statement of Similar Goods or Directly Competing Goods**

Article 1 point 10, PP No. 34 of 2011 states that similar goods are

domestically produced goods that are identical or similar in all respects to the goods imports or goods that have characteristics resembling imported goods.

Imported Goods are Similar Goods or Directly Competing Goods with the production goods produced by the Applicant, due to the similarity of the physical characteristics, uses, and raw materials.

#### E. INFORMATION ON THE AMOUNT OF IMPORTED GOODS

##### 1. Import Quantity

**Table 3. Total and Relative Imports of Goods**

DESCRIPTION	UNIT	YEAR		
		2019	2020	2021
Import Amount	Ton	435,091	249,828	267,704
Change	%		(42,58)	7,16
import train	%			(21,56)
National Production	Index	100	86,73	88,12
Relative Import	Index	100	66,21	69,82
Change	%		(33,79)	5,47
Relative Import Trend	%			(16,44)

Source: BPS Data, Association Member Data, and Applicant

From table 3 above, the number of imports from 2020 to 2021 has increased in absolute terms by 7.16% and relatively by 3.80%, although the trend has decreased by 21.56% and 16.44% during the 2019-2019 period. 2021.

##### 2. Import Share

**Table 4. Import Share**

NO.	COUNTRY OF ORIGIN IMPOR	2019		2020		2021	
		VOLUME (TON)	SHARE (%)	VOLUME (TON)	SHARE (%)	SHARE VOLUME (TON)	(%)
1.	RRT	305.304	70,17	134.387	53,79	130.831	48,87
2.	South Korea	43.868	10,08	31.823	12,74	34.768	12,99
3.	Vietnam	14..474	3,33	14.751	5,90	26.724	9,98
4.	Hongkong	24.780	5,70	19.185	7,68	25.299	9,45
5.	Taiwan	21.128	4,86	15.721	6,29	18.816	7,03
6.	Malaysia	7. 1.483	0,34	18.051	7,23	14.928	5,58
	Countries Others under 3%	24.055	5,53	15.910	6,37	16.338	6,10
8.	Total	435.091	100	249.828	100	267.704	100

Source: BPS data

As shown in table 4 above, the PRC country controlled the Indonesian market in 2021 with an import market share of 48.87%, followed by other countries, namely South Korea with an import market share of 12.99%, Vietnam with a share of import market of 9.98%, Hong Kong with an import market share of 9.45%, Taiwan with 7.03% import market share, Malaysia with import market share by 5.58% and Other Countries below 3% with import market share by 6.10%.

## F. APPLICANT DAMAGE INFORMATION

Table 5. Performance Data Indicators

NO.	DESCRIPTION	UNIT	2019	2020	2021	TRAIN (%) 19-21
1	Production	Index	100	86,34	88,43	(5,96)
		Change (%)		(13,66)	2,42	
2	Domestic Sales	Index	100	85,90	90,00	(5,13)
		Change (%)		(14,10)	4,77	
3	Productivity	Index	100	94,74	96,67	(1,68)
		Change (%)		(5,26)	2,03	
4	Used Capacity	Index	100	86,93	89,32	(5,49)
		Change (%)		(13,07)	2,76	
5	Gain/(Loss)	Index	100	(409,30)	(635,59)	(99,86)
		Change (%)		(509,30)	55,29	
6	Manpower	Index	100	91,13	91,48	(4,35)
		Change (%)		(8,87)	0,39	
7	Final Inventory	Index	100	116,31	121,07	10,03
		Change (%)		16,31	4,09	

Source: Applicant

The following is an explanation of the company's performance indicators:

### 1. Production

During the 2019-2021 period, production decreased with a trend of 5.96%.

The largest production decline occurred in 2019-2020 of 13.66% from 100 index points to 86.34 index points. Next in 2020-2021 production experienced a slight increase of 2.42% from 86.34 index points to 88.43 points index.

## **2. Domestic Sales**

During the 2019-2021 period, domestic sales decreased with a trend by 5.13%. The biggest decline in domestic sales occurred in 2019-2020 by 14.10% from 100 index points to 85.90 index points. Next in 2020-2021 domestic sales experienced a slight increase of 4.77% from 85.90 index points to 90.00 index points.

## **3. Productivity**

During the 2019-2021 period, productivity decreased with a trend of 1.68%. The biggest decline in productivity occurred in 2019-2020 by 5.26% from 100 index points to 94.74 index points. Furthermore, in 2020-2021 productivity experienced a slight increase of 2.03% from 94.74 index points to 96.67 index points.

## **4. Kapasitas Terpakai**

During the 2019-2021 period, used capacity decreased with a trend of 5.49%. The largest decline in used capacity occurred in 2019-2020 by 13.07% from 100 index points to 86.93 index points. Furthermore, in 2020-2021 the capacity used experienced a slight increase of 2.76% from 86.93 index points to 89.32 index points.

## **5. Advantages/Disadvantages**

During the 2019-2021 period, the domestic industry experienced losses with a downward trend of 99.86%. The biggest loss occurred in 2020-2021 of 509.30% from a gain of 100 index points to a loss of 409.30 index points. Furthermore, in 2021 losses will continue to increase to 635.59 index points.

## **6. Manpower**

During the 2019-2021 period, the number of workers decreased with a trend by 4.35%. The largest decrease in the workforce occurred in 2019-2020 of 8.87% from 100 index points to 91.13 index points. Next year 2020-2021 workforce experienced a slight increase of 0.39% from 91.13 points index to 91.48 index points.

## **7. Final Preparation**

During the 2019-2021 period, ending inventory increased with a trend of 10.03%. The largest increase in ending inventory occurred in 2019-2020 of 16.31% from 100 index points to 116.31 index points. Next year 2020-2021 ending inventory continued to increase by 4.09% from 116.31 index points to 121.07 index points.

**G. MARKET SHARE****Table 6. Domestic Market Conditions**

NO.	INDICATOR	UNIT	YEAR			TRAIN (%) 19-21
			2019	2020	2021	
1.	National Consumption	Index	100	76,20	80,85	(10,08)
2.	Applicant's Domestic Sales	Index	100	85,90	90,00	(5,13)
3.	Non-Applicant Domestic Sales	Index	100	89,13	95,10	(2,48)
4.	Import Quantity	Ton	435.091	249.828	267.704	(21,56)
5.	Applicant Market Share	Index	100	112,73	111,31	5,50
6.	Non-Applicant Market Share	Index	100	116,97	117,62	8,45
7.	Import Market Share	Index	100	75,36	76,10	(12,77)

Source: Indonesian Textile Association, BPS and IDN

As shown in table 6 above, during the period 2019-2021 market share

applicants in 2020-2021 decreased from 112.73 index points to 111.31

index points. On the other hand, the share of imports in 2020-2021 has increased from 75.36

index points to 76.10 index points.

Meanwhile, when the share of imports experienced an increase, national consumption also experienced an increase

an increase from 76.20 index points in 2020 to 80.85 index points in

in 2021. The number of imports began to increase from 2020 which amounted to 249,828 tons to

267,704 Tons in 2021.

**H. STRUCTURAL ADJUSTMENT**

Since the enactment of BMTP based on PMK No. 78/PMK.010/21 concerning Amendments to Regulation of the Minister of Finance

Number 55/PMK.010/2020 concerning Imposition of BMTP on

Import of Fabric Products, the Applicant has made several structural adjustments in accordance with

commitment in the program plan contained in the final report on the results of the investigation

imposition of BMTP on the import of cloth goods, as for the status of the implementation can be

illustrated in the following table:

**Table 7. Realization of Implementation of Structural Adjustments**

NO.	SEGMENT	ACTION PLAN	ACTION STAGE	REALIZED	NOT YET REALIZED
1.	Cloth Woven from Cotton	Purchase of new production machines to improve quality	New machine installation and trial	45 %	55 %
			Production run	36 %	64 %



NO.	SEGMENT	ACTION PLAN	ACTION STAGE	REALIZED	NOT YET REALIZED
		and production efficiency	Upgrade new machine technology	61%	39 %
		To innovate products by developing new products and adding variants of color products and printed fabrics	Research designs with new machines and make purchases of dyeing and printing machines	42 %	58 %
			Continue to research new designs and carry out installations and trials of new machines	72 %	28 %
		competitive and high selling value	Continue to research new designs and carry out installation and trial of new machines and start production of new machines	47 %	53 %
		HR development through recruitment and training	Training and improvement of production yield and quality	61 %	39 %
			Production management training	64 %	36 %
			Production marketing strategy and development training	74 %	26 %
	Installation-Installation			55,78 %	44,22%
2	Cloth Weaving of Fiber	Updating machines every year by purchasing new machines that have the technology in accordance with what is needed		54%	46 %
	Staple Synthetic and artificial	Innovate and develop every year by creating competitive new products with high selling value		60 %	40 %
		HR development to increase productivity	Conduct training to improve product yield and quality, how to operate machines, and special courses for supervisor level and above in Educational Institutions and Textile Training	75 %	25 %
			Production management management training and continuing special courses for supervisor level and above in Educational Institutions and Textile Training	77 %	23 %
			Product development and marketing strategy training and continuing special courses for supervisor level and above in Institutions	66 %	34 %

NO.	SEGMENT	ACTION PLAN	ACTION STAGE	REALIZED	NOT YET REALIZED
			education and training Textile		
	Installation-Installation			66,4 %	33,6 %
3 Cloth	Weaving of Yarn filament Synthetic and artificial	Production machine upgrade	Old engine replacement	62 %	38 %
			Invest in new machines with the latest technology	71 %	29 %
			Machine maintenance	58 %	42 %
		Innovate products every year through market development and exhibitions		77 %	23 %
		Improving HR competencies every year through periodic training		75%	25 %
	Installation-Installation			68,6 %	31,4 %
4 Cloth	Woven Special and Embroidery	Renewal of machinery for the manufacture of greige tulle, net fabric, and embroidered fabric to be more efficient and more productive through engine renewal	Tulle and other fabric machine renewal	51 %	49 %
			Yarn winding machine update	56 %	44 %
			Packing machine update	48 %	52 %
		Innovate products to be more varied and add product selling value	Collaboration with local and international designers to develop products that are needed by the local market	38 %	62 %
			Purchasing a dyeing machine to improve quality	61 %	39 %
			Purchase of machine accessories and attachments	46 %	54 %
		HR development to increase productivity	Train and recruit workers	70 %	30 %
			Technical training with the help of experts from abroad	31 %	69 %
			Management level soft skills training	66 %	34 %
	Installation-Installation			51,89	48,11
5 Cloth	Knitted	Purchase of new production machines to improve production quality and efficiency	Survey looking for a suitable engine	68 %	32 %
			New machine purchase, installation and trial	58 %	42 %
			Use of new machine	44 %	56 %

NO.	SEGMENT	ACTION PLAN	ACTION STAGE	REALIZED	NOT YET REALIZED
		Conduct product innovation by developing new products	Collaborating with several local and international designers	32 %	68 %
			Carry out product development and sample making process	55 %	45 %
			Marketing of new products	69 %	31 %
		Human resource development by doing through: Recruitment and training	Collaborating with several agencies Textile Education (by providing a scholarship program with official ties)	53 %	47 %
			Employment of textile academy graduates	66 %	34 %
			Preparation for ISO certification and other international standards	40 %	60 %
	Installation-Installation			53,89 %	46,11 %

Source: Applicant

The percentage value of implementation can be described as follows:

#### 1. Cotton Woven Fabric

- Purchase of new production machines to improve production quality and efficiency:

##### a. New machine installation and trial (Year I)

The installation and trial of new machines have been realized as much as 45% and 55% have not been realized.

##### b. Running production (Year II)

Running production has been realized as much as 36% and has not been realized as much 64%.

##### c. New engine technology upgrade (Year III)

61% of new engine technology upgrades have been realized and 39% have not been realized.

- Conduct product innovation by developing new products and

add a variety of color products and printed fabrics that are competitive and have selling points height:

##### a. Research designs with new machines and make machine purchases

dyeing and printing

Research designs with new machines and make machine purchases  
dyeing and printing has been realized as much as 42% and not yet realized  
as much as 58%.

- b. Continue to research new designs and carry out installations and trials of new machines  
Continue to research new designs and carry out installations and trials of new machines  
72% have been realized and 28% have not been realized.

- c. Continue to research new designs and carry out installations and trials of new machines  
as well as start production of new machines  
Continuing research on new designs and installing and testing new machines as well as starting  
production of new machines has been realized as much as 47% and 53% have not been realized.

- Human resource development through recruitment and training:

- a. Training and improvement of production yield and quality  
Training and improvement of production yields and quality have been realized as much as 61% and  
39% have not been realized
- b. Production management training  
Production management management training has been realized as much as 64% and 36% have not  
been realized
- c. Production marketing strategy and development training  
Development training and production marketing strategy have been realized  
as much as 74% and has not been realized as much as 26%

## 2. Woven Fabrics from Synthetic and Artificial Staple Fibers

- Updating machines every year by purchasing new machines that are  
have the technology in accordance with what is needed  
Purchase of new machines that have been realized by the applicant is 54% and not yet  
realized by 46%.
- Innovate and develop every year by making products  
new competitive with high selling value  
The applicant has been innovating and developing every year by making products that are competitive and  
have a high selling value of 60% and not yet  
realized by 40%.
- Human resource development to increase productivity:
  - a. Conduct training to improve product yield and quality, how to run  
machines, and special courses for supervisor level and above in Educational Institutions  
and Textile Training  
The applicant has carried out various yield and quality improvement training  
product by 75% and 25% unrealized.

- b. Production management management training and continuing special courses for supervisor level and above in Textile Education and Training Institute  
The applicant has conducted production management training and continue special courses for supervisor level and above in Educational Institutions and Textile Training by 77% and 23% have not been realized.
- c. Product development and marketing strategy training and continuing course especially for supervisor level and above in Textile Education and Training Institute  
The applicant has conducted marketing strategy and development training products and continuing special courses for supervisor level and above in Institutions Textile Education and Training 66% realized and not yet realized as much as 34%.

### 3. Woven Fabrics from Synthetic and Artificial Filament Yarn

- Rejuvenation of production machines
  - a. Old engine replacement  
The applicant has replaced the old machine and has realized 62% of the 100% realization target.
  - b. Invest in new machines with the latest technology  
The applicant has invested in a new machine with new technology and has already realized as much as 71% of the target realization of 100%.
  - c. Machine maintenance  
The applicant has carried out machine maintenance and has realized as much as 58% of the 100% realization target.
- Innovate products every year through market development and exhibitions  
The applicant has made product innovations every year through market development and exhibitions and has been realized as much as 77% and 23% have not been realized.
- Improve HR competency every year through regular training  
The applicant has been increasing the competence of HR every year through training periodically and realized as much as 75% and not realized as much as 25%.

### 4. Custom Woven and Embroidered Fabrics

- Renewal of machines for greige tulle, net fabric, and embroidered fabric to be more efficient and more productive through engine upgrades:
  - a. Tulle and other fabric machine renewal  
The applicant has updated the tulle and other fabric machines as much as 51% of the 100% realization target.
  - b. Yarn winding machine update  
The applicant has updated the yarn winding machine as much as 56% of the 100% realization target.

c. Packing machine update

The applicant has updated the packing machines as much as 48% of the 100% realization target.

• Conduct product innovations to be more varied and increase product selling value:

a. Cooperation with local and international designers to develop products

what the local market needs

The applicant has collaborated with local and international designers to develop products needed by the local market as much as 38% of the 100% realization target.

b. Purchasing a dyeing machine to improve quality

The applicant has purchased a dyeing machine to improve quality as much as 61% of the 100% realization target.

c. Purchase of machine accessories and attachments

The applicant has purchased 46% of machine accessories and attachments from the 100% realization target.

• Human resource development to increase productivity:

a. Train and recruit workers

The applicant has carried out training and recruitment of workers and has realized as much as 70% of the 100% realization target.

b. Technical training with the help of experts from abroad

The applicant has carried out technical training with the help of outside experts country and has realized as much as 31% of the 100% realization target.

c. Management level soft skills training

The applicant has carried out management level soft skills training and has realized as much as 66% of the 100% realization target.

5. Knitted Fabric

• Purchase of new production machines to improve production quality and efficiency:

a. Survey looking for a suitable engine

The applicant has conducted a survey to find a suitable machine and has realized as much as 68% of the 100% realization target.

b. New machine purchase, installation and trial

The applicant has purchased a new machine, the installation and trial have been realized as much as 58% of the target realization of 100%.

c. Use of new machine

The applicant has used a new machine and has realized 44% of the 100% realization target.

• Conduct product innovation by developing new products:

a. Collaborating with several local and international designers

The applicant has collaborated with several local and international level and has been realized as much as 32% of the 100% realization target.

b. Carry out product development and sample making process

The applicant has carried out product development and sample making process and has been realized as much as 55% of the 100% realization target.

c. Marketing of new products

The applicant has marketed the new product and has realized 69% of the 100% realization target.

• Human resource development through recruitment and training:

a. Collaborating with several Textile Education Agencies (by providing scholarship programs with official ties)

The applicant has collaborated with several Textile Education Agencies and has realized 53% of the 100% realization target.

b. Employment of textile academy graduates

The applicant has placed a workforce of textile academy graduates and 66% of the 100% realization target has been realized.

c. Preparation for ISO certification and other international standards

The applicant has prepared ISO certification and other international standards and has been realized as much as 40% of the 100% realization target.

Based on the foregoing, the Petitioner has carried out the adjustment program commitment structurally, but there are obstacles so that there are things that are not optimal for carried out by the Applicant. Because there are still many imported goods, fabrics still provide influence on the non-optimal implementation of the Structural Adjustment program which has become the cause of delay in the recovery of the Petitioner's losses.

## **I. APPLICATION FOR EXTENSION OF RESEARCH IMPLEMENTATION OF ACTION**

### **TRADE SECURITY**

In connection with the non-recovery of serious losses or threats of serious losses that suffered by the Petitioner from 2019-2021 as described in table 5 (performance indicators) and the structural adjustments as described in table 7 have not yet been completed, then the Petitioner asks the Government of the Republic of Indonesia to extend the imposition of BMTP on the import of cloth goods.

#### **J. WILLING TO COOPERATE**

Applicants are willing to cooperate fully throughout the research process in order  
imposition of *Extension of Safeguards*  
*Measures*) on the import of cloth goods.

Jakarta, 18 April 2022



INDONESIA TEXTILE ASSOCIATION  
INDONESIAN TEXTILE ASSOCIATION

**Jemmy Kartiwa Sastraatmadja**

Chairman of the Indonesian Textile Association



**Attachment 1.**

**Importer's Name and Address**

**IMPORTER OF COTTON FABRIC HS 5208-5212.**

1. PT. SRI REJEKI ISMAN TBK JL. KH. SAMANHUDI NO. 88, SUKOHARJO, SOLO, JAVA  
TENGAH, INDONESIA, [www.sritex.co.id](http://www.sritex.co.id) (0271) 593188 (0271) 593488
2. HAKATEX, PT. MOH ROAD. TOHA KM. 5,6, PESAWAHAN KELURAHAN, SUB-DISTRICT  
BODJONG LOA, BANDUNG REGENCY, WEST JAVA  
[www.hakatex.com](http://www.hakatex.com) (022) 5203787 (022) 5229678 [info@hakatex.com](mailto:info@hakatex.com)
3. PT. SARI COLOR ORIGINAL TEXTILE INDUSTRY DS. KEMIRI RT001/013, KEC.  
KEBAKKRAMAT, KARANGANYAR, CENTRAL JAVA  
[www.sariwarna.co.id](http://www.sariwarna.co.id) (0271) 644570 (0271) 648801 [swasolo@indo.net.id](mailto:swasolo@indo.net.id)
4. PT. ARGO PANTES TBK JL. GATOT SUBROTO KAV. 22, WISMA ARGO MANUNGAL  
2nd Floor, SETIABUDI - JAKA  
[www.argo.co.id](http://www.argo.co.id) (021) 2520065 (021) 2520108
5. PT. UNGARAN SARI GARMENTS JL. PANGERAN DIPONONEGORO NO. 235 PO BOX 108  
SEMARANG, Central Java 50512 (024) 6925590
6. PT METRO GARMIN JL. MOH. TOHA KM 7.5 (JL. RAYA DAEUHKOLOT NO. 243)  
BANDUNG, INDONESIA  
[www.metrogarmin.com](http://www.metrogarmin.com) (022) 5202900 (022) 5202636 [metro@bdg.centrin.net.id](mailto:metro@bdg.centrin.net.id)
7. DAN LYRIS, PT KEL. BANARAN (SELATAN LAWEYAN) GROGOL KEC, SUKOHARJO KAB (0271) 719412 (0271)  
717178
8. PT. MULTI GARMENJAYA JL. SOEKARNO HATTA NO. 578 RT. 004 RW. 011 BANDUNG  
WEST JAVA.  
[www.multigarmenjaya.com](http://www.multigarmenjaya.com) (022) 7563343 (022) 7562052
9. PT. GISTEX NISSHINBO INDONESIA JL. NANJUN NO. 66 KEL. UTAMA KEC. CIMAHI  
SELATAN CIMAHI-40533 INDONESIA (022) 6674531
10. PT. PAN BROTHERS TBK JALAN RAYA SOLO-SRAGEN KM 22, VILLAGE/KELURAHAN  
PURWOSUMAN, SIDOHARJO DISTRICT, SRAGEN, CENTRAL JAVA  
[www.panbrotherstbk.com](http://www.panbrotherstbk.com) (021) 5900718 (021) 5900706

**IMPORTER OF STAPLE FIBER FABRIC, RAYON, TR + BLENDS HS 5512-5516**

1. PT. SRI REJEKI ISMAN TBK JL. KH. SAMANHUDI NO. 88, SUKOHARJO, SOLO, JAVA  
CENTRAL, INDONESIA  
[www.sritex.co.id](http://www.sritex.co.id) (0271) 593188 (0271) 593488
2. TRISCO TAILORED APPAREL MANUFACTURING, PT. JL. RAYA KOPO SOREANG KM 11,5 CILAMPENI,  
KATAPANG, BANDUNG, JABAR (022) 5897185 (022) 5897186 [trisco@bdg.centrin.co.id](mailto:trisco@bdg.centrin.co.id)
3. PT. MATARAM TUNGGAL GARMENT BALONG, DONOHARJO VILLAGE, SUB-DISTRICT  
NGAGLIK, SLEMAN DISTRICT, JOGJAKARTA  
[www.mtg.co.id](http://www.mtg.co.id) (0274) 896100 (0274) 895960 [mtg-yk@indo.net.id](mailto:mtg-yk@indo.net.id)
4. PT. UNGARAN SARI GARMENTS JL. PANGERAN DIPONONEGORO NO. 235 PO BOX 108  
SEMARANG, Central Java 50512 (024) 6925590
5. PT. PAN BROTHERS TBK JALAN RAYA SOLO-SRAGEN KM 22, VILLAGE/KELURAHAN  
PURWOSUMAN, SIDOHARJO DISTRICT, SRAGEN, CENTRAL JAVA  
[www.panbrotherstbk.com](http://www.panbrotherstbk.com) (021) 5900718 (021) 5900706
6. PT. GISTEX NISSHINBO INDONESIA JL. NANJUN NO. 66 KEL. UTAMA KEC. CIMAHI  
SELATAN CIMAHI-40533 INDONESIA (022) 6674531
7. SANSAN SAUDARATEX JAYA, PT. JL. CIBALIGO NO. 33 LEUWIGAJAH CIMAHI BANDUNG  
[www.ptsansan.com](http://www.ptsansan.com) (022) 6033788 (022) 6030682 [textile@ptsansan.com](mailto:textile@ptsansan.com)

8. HAKATEX, PT. MOH ROAD. TOHA KM. 5,6, PESAWAHAN KELURAHAN, SUB-DISTRICT  
BODJONG LOA, BANDUNG REGENCY, WEST JAVA  
[www.hakatex.com](http://www.hakatex.com) (022) 5203787 (022) 5229678 [info@hakatex.com](mailto:info@hakatex.com)
9. MASTERINDO JAYA ABADI, PT JL. SOEKARNO HATTA NO. 24 KEL. CIBUNTU BANDUNG -  
WEST JAVA, [www.masterindo.com](http://www.masterindo.com) (022) 6032662 (022) 6031322 [office@masterindo.com](mailto:office@masterindo.com)
10. PT. MULTI GARMENJAYA JL. SOEKARNO HATTA NO. 578 RT. 004 RW. 011 BANDUNG  
WEST JAVA. [www.multigarmenjaya.com](http://www.multigarmenjaya.com) (022) 7563343 (022) 7562052

**IMPORTER OF FILAMENT FABRIC HS 5407-5408**

1. PT. ATEJA GRACE TEXINDO JL. RAYA BATUJAJAR KM 3 NUMBER 330, LAKSANAMEKAR PADALARANG BANDUNG  
BARAT  
(022) 6866334 (022) 6866338
2. PT. NOBEL INDUSTRIES JALAN SOEKARNO HATTA NO. 817, MEKAR MULYA KELURAHAN, PENYILEUKAN DISTRICT,  
BANDUNG, WEST JAVA  
[www.nobelcarpets.com](http://www.nobelcarpets.com) (022) 7801111 (022) 7800202 [factory@nobelcarpets.com](mailto:factory@nobelcarpets.com)
3. PT. INDO-RAMA SYNTHETICS TBK JALAN RAYA UBRUG, DESA KEMBANG KUNING, KECAMATAN JATILUHUR, PO  
BOX 2 & 7, PURWAKARTA, JAWA BARAT 411  
[www.indorama.com](http://www.indorama.com) (021) 5261555 (021) 5261501 [info@indorama.com](mailto:info@indorama.com)
4. SIPATEX PUTRI LESTARI, PT JL. PUTRI NO.6, LENGKONG, BANDUNG, 40262 INDONESIA TEL: 62  
22 7307777  
[www.sipatex.co.id](http://www.sipatex.co.id) (022) 7307777 (022) 7302888 [info@sipatex.co.id](mailto:info@sipatex.co.id)
5. DEWA SUTRATLEX, PT JL. CIBALIGO NO.76 CIBUEUREUM, CIMAHI SELATAN, CIMAHI (022) 6035688  
(022) 6030990
6. PT. PAN ASIA JAYA ABADI JL MOCHAMAD TOHA KM 6,8 (CISIRUNG) PASAWAHAN, KECAMATAN DAYEUEH KOLOT B
7. DAESE GARMIN, PT. JALAN H. IBRAHIM ADJIE NUMBER 90, KEBON WARU KELURAHAN, BATUNUNGGAL DISTRICT,  
BANDUNG CITY, JAW  
[www.daesegarmin.com](http://www.daesegarmin.com) (022)7208117 (022)7200905 [daese@daesegarmin.com](mailto:daese@daesegarmin.com)
8. GISTEX GARMENT INDONESIA, PT. PANYAWUNGAN ROAD KM. 19, CILUENYI WETAN VILLAGE, KEC.  
CILEUNYI, KAB. BANDUNG WEST JAVA  
(022) 7798891 (022) 7798545 [stg\\_ina@rad.net.id](mailto:stg_ina@rad.net.id)
9. HAKATEX, PT. MOH ROAD. TOHA KM. 5,6, PESAWAHAN KELURAHAN, BODJONG DISTRICT  
LOA, BANDUNG DISTRICT, WEST JAVA  
[www.hakatex.com](http://www.hakatex.com) (022) 5203787 (022) 5229678 [info@hakatex.com](mailto:info@hakatex.com)
10. PT. UNGARAN SARI GARMENTS JL. PANGERAN DIPONONEGORO NO. 235 PO BOX 108 SEMARANG  
Central Java 50512 (024) 6925590

**IMPORTER OF SPECIAL WOVEN FABRIC – LACE & EMBROIDERY HS 5804,5810:**

1. LEADING GARMENT INDUSTRIES, PT. JALAN MEMGER HILIR NUMBER 97, ( MOH.  
TOHA KM. 5,6,) PASAWAHAN, DAYEUEHKOLOT, BANDUNG, JAVA BARAT  
[www.leadinggarment.com](http://www.leadinggarment.com) (022) 5200638 (022) 5207000 [leading@leadinggarment.com](mailto:leading@leadinggarment.com)
2. PT. UNGARAN SARI GARMENTS JL. PANGERAN DIPONONEGORO NO. 235 PO BOX 108  
SEMARANG, Central Java 50512 (024) 6925590
3. MASTERINDO JAYA ABADI, PT JL. SOEKARNO HATTA NO. 24 KEL. CIBUNTU BANDUNG -  
WEST JAVA  
[www.masterindo.com](http://www.masterindo.com) (022) 6032662 (022) 6031322 [office@masterindo.com](mailto:office@masterindo.com)
4. PT. GLOBALINDO INTIMATES JL RAYA SOLO-YOGYA, DK. MLESE NO. RT. RW.  
KEL. MLESE KEC. CEPER, KLATEN, CENTRAL JAVA (0272) 331121

5. PT. MULIA KNITTING FACTORY JL. SEMANAN RAYA NO. 50, DAAN MOGOTKM 16 JAKBAR  
[www.sipatatex.com](http://www.sipatatex.com) (022) 6866156 (022) 6866159 [sipatatex@bdg.centrin.net.id](mailto:sipatatex@bdg.centrin.net.id)
6. DELAMI GARMENT INDUSTRIES, PT. JL. SOEKARNO-HATTA NO. 571, RT. 01 RW. 12 (022) 7300333 (022) 7300049
7. TRISCO TAILORED APPAREL MANUFACTURING, PT. JL. RAYA KOPO SOREANG KM 11,5 CILAMPENI, KATAPANG, BANDUNG, JABAR (022) 5897185 (022) 5897186 [trisco@bdg.centrin.co.id](mailto:trisco@bdg.centrin.co.id)
8. PT. MULTI GARMENJAYA JL. SOEKARNO HATTA NO. 578 RT. 004 RW. 011 BANDUNG WEST JAVA.  
[www.multigarmenjaya.com](http://www.multigarmenjaya.com) (022) 7563343 (022) 7562052
9. PT. KEWALRAM INDONESIA ROAD RANCAEKEK KM. 25, SUKADANA VILLAGE, CIMAGGUNG DISTRICT, SUMEDANG REGENCY, WEST JAVA  
[www.ekewalram.com](http://www.ekewalram.com) (022) 7798346 (022) 7797142 [ptkifac@redattglobal.net](mailto:ptkifac@redattglobal.net)
10. PT. INDONESIA WACOAL  
JL. TARIKOLOT NO.59 BOGOR (021) 8753611 (021) 8752502 [cs@wacoal.co.id](mailto:cs@wacoal.co.id)

#### **KNIT FABRIC IMPORTER HS 6001-6006**

1. LEADING GARMENT INDUSTRIES, PT. JALAN MEMGER HILIR NUMBER 97, ( MOH. TOHA KM. 5,6,) PASAWAHAN, DAYEUKHKOLOT, BANDUNG, JAVA BARAT  
[www.leadinggarment.com](http://www.leadinggarment.com) (022) 5200638 (022) 5207000 [leading@leadinggarment.com](mailto:leading@leadinggarment.com)
2. PT BINA BUSANA INTERNUSA JL. WIJAYA IV RANDUGARUT TUGU, TUGU, SEMARANG, 50153 INDONESIA
3. GISTEX GARMENT INDONESIA, PT. PANYAWUNGAN ROAD KM. 19, CILUENYI VILLAGE WETAN, KEC. CILEUNYI, KAB. BANDUNG WEST JAVA  
(022) 7798891 (022) 7798545 [stg\\_ina@rad.net.id](mailto:stg_ina@rad.net.id)
4. PT. NOBLE INDONESIA KP. MOMONOT RT01 RW11 TLAJUNG VILLAGE UDIK GUNUNG PUTRI BOGOR INDONESIA (021) 8675461
5. PT SARI COLOR ASLI TEXTILE INDUSTRY JL. HOS COKROAMINOTO NO 28 PUCANG SAWIT KELURAHAN JEBRES KO(0271) 645767  
[www.sariwarna.co.id](http://www.sariwarna.co.id)
6. PT. GLOBALINDO INTIMATES JL RAYA SOLO-YOGYA, DK. MLESE NO. RT. RW. KEL. MLESE KEC. CEPER, KLATEN, CENTRAL JAVA (0272) 331121
7. MASTERINDO JAYA ABADI, PT JL. SOEKARNO HATTA NO. 24 KEL. CIBUNTU BANDUNG WEST JAVA  
[www.masterindo.com](http://www.masterindo.com) (022) 6032662 (022) 6031322 [office@masterindo.com](mailto:office@masterindo.com)
8. PT. HANSAE INDONESIA MAIN JAVA ROAD 14 BLOCK A-06 BONDED AREA NUSANTARA CAKUNG, NORTH JAKARTA
9. PT. PAN BROTHERS TBK JALAN RAYA SOLO-SRAGEN KM 22, PURWOSUMAN VILLAGE/ KELURAHAN, SIDOHARJO DISTRICT, SRAGEN, CENTRAL JAVA  
[www.panbrotherstbk.com](http://www.panbrotherstbk.com) (021) 5900718 (021) 5900706
10. PT. GREAT APPAREL INDONESIA JL. PELABUHAN II NO. 200 KEL. WARUDOYONG SUKABUMI 43133 - WEST JAVA - INDONESIA  
[www.great-apparel.co.id](http://www.great-apparel.co.id) [yslee@great-apparel.co.id](mailto:yslee@great-apparel.co.id)

**Appendix 2.**

**Name and Address of Exporter**

**COTTON FABRIC EXPORTER HS 5208-5212**

1. Gungzhou Gutex Holdings Limited  
11-14th Floor, No 2 Fuqian Road, Yuexiu District Guangzhou, Guangdong 510030, China
2. Changzhou Laojinjuan Textile Co Ltd  
Room 707, Phoenix Building, No 555 Tongjiang Mid Road Xinbei District, Changzhou, Jiangsu 213022, China
3. Hebei Xindadong Textile Co Ltd No 21 Gongye Road, Jinzhou City Hebei 050026, China
4. Elaf (Fujian) Textile Technology Co Ltd

- No 1-2, Building B, Fufeng Commercial Town, Nanyang Road Shishi, Fujian 362700, China
5. Jiangyin City Chamber Knitting Co Ltd No 1  
Zhoujiawan, Songqiao Yunting Street, Jiangyin Jiangsu 214400, China
  6. Argus Textile Technology Co Ltd  
Room C, 3rd Floor, Building 3, No 889 Yishan Road Shanghai 200233, China
  7. Shaoxing Henglan Textile Co Ltd No  
117, 3/F, Distric B, Dongsheng Road Market Keqiao District, Shaoxing, Zhejiang 312000 China
  8. Wujiang Hengjia Textile Co Ltd No 3 North Hong An Road, North Economic Development Zone  
Shengze Wujiang, Jiangsu Jiangsu 2152228, China
  9. Jiangyin First Textile Co Ltd

No 55 Yabao Road, Shengang Town Lingang Economic Development Zone, Jiangyin Jiangsu 214443, China

10. KAYJUNE COMPANY

B&K Building 4F, 25, Eonju-to 85-Gil, Gangnam-Gu, Seoul, Republic of Korea

**KAIN FILAMENT HS 5407-5408**

1. Nantong Liyate Textiles Co Ltd  
Hongxing Industrial Park, Rucheng Town, Rugao City Jiangsu 22655500, China
2. Wujiang South-East Sea Textile Co Ltd No 38 Sanhuan Road South, Shengze, Wujiang  
Jiangsu 215228, China
3. Huzhou Baiji Imp & Exp Trade Co Ltd Room 210, Block 1, No  
208 Longxi Road, Huzhou Zhejiang 313000, China
4. Wujiang Deyi Fashions Cloth Co Ltd  
Wuqiao, Shengze, Wujiang, Jiangsu 215228, China
5. Wujiang Jialun Textiles Co Ltd No  
55 Yuanqu Road, Shengze, Wujiang
6. Wuxi Xihong Textiles Co Ltd

- No 250 Huxi Road, Yuqi Town, Wuxi Jiangsu 214183, China
7. Huzhou Styles Jingcheng Textile Co. Ltd.  
Shuanglin Styly Industry Zone, Huzhou Zhejiang 313012, China
  8. Lusilk Textile (Suzhou) Co Ltd  
2/F, East Industrial Park, No 1875-2 Togda Road Wuzhong District, Suzhou, Jiangsu 215124, China
  9. Shanghai Meizhi Fashion Garment Co Ltd  
Room 807, Wuzhong Business Building No 1099 Wuzhing Road, Minhang District Shanghai 201103, China
  10. Taekwang 162-1 Jangchung-dong 2-Ga, Jang-Gu, Seoul, Korea

**BENANG SPUN POLYESTER, RAYON, TR + BLENDS (HS 5509-5510)**

1. San Yang Textile Co., Ltd.  
No.106, Liqi Rd. Lijin County, Dongying City, Shandong Province, China Tel:  
+86-546-5368188
2. Anhui Suzhou Runda Textile Group Co.,Ltd  
No.122 West Daonan Rd,Dangshan Suzhou, Anhui, China  
AAJ International (India)
3. Mahalaxmi Nagar, Back to Kalode Bhawan, Nikhade Lay-Out, Sant Tukdoji Ward,, 442301  
Hinganghat, Maharashtra India
4. Ningbo Huadong Xufeng Textile Co., Ltd  
No.1, Tashan Zone, Meiqiao Road, Ninghai, Zhejiang, China
5. Pinak Texport Pvt.Ltd.  
512 Vakratunda Corporate Park Off Aarey Road  
Pahadi Village, Goregaon East Mumbai - India
6. Nadeem Textile Mills Limited  
Lakson Square Building # 3, Sarwar Shaheed Road, Karachi, Pakistan
7. Taekwang Industrial Co., Ltd.  
162-1 Jangchung-dong 2-ga, Jung-gu, Seoul, Korea
8. Dezhou Hengfeng Group  
No. 194, Sanba Road, Dezhou, Shandong, China
9. Zhejiang Yuyuan Textile Co., Ltd.  
CaoYang Village, Ya Qian Town, Xiao Shan, HangZhou ZheJiang, China
10. Hangzhou Yongfang Textile Import&Export Co., Ltd  
Suoqian Industrial Park, Xiaoshan, Hangzhou, Zhejiang, China.

**KAIN STAPLE FIBER, RAYON, TR + BLENDS HS 5512-5516**

1. Hangzhou Hongju Textile Co. Ltd  
3/F, Jianxin Textile, Kanshan Industrial Park, Xiaoshan Hangzhou, Zhejiang 311243, China
2. Jiangyin Prosperous-Forever Textile Co Ltd  
Room 1809, Mingdu International Building No 218 Changjiang Road, Jiangyin, Jiangsu 214400, China
3. Hangzhou Huayi Textile Co Ltd  
Guali Town, Xiaoshan, Hangzhou Zhejiang 311241, China
4. Jiangsu Guotai International Group Guohua Corp Ltd  
15-17/F, Guotai Mansion, Renmin Road Zhangjiagang Jiangsu 215600, China
5. Shaoxing County Huile Textile CO Ktd  
Room 707, 7/F, Yi Nan Center, Jinkeqiao Avenue, Shaoxing Zhejiang 312030, China
6. Shaoxing County Yixiu Textile Co Ltd  
B-208, World Trade Centre Keqiao, Shaoxing Zhejiang 312030, China
7. Shaoxing County Qiuchan Textile Co Ltd  
Room 505, Fifth Floor, East Building, 1475 Xingyue Road Keqiao, Shaoxing, Zhejiang 312020, China
8. Shaoxing County Xinsen Textile Co Ltd  
Flat 2206-07, Int'l Trade Mansion, No 1358 Jinkeqiao Road Keqiao, Shaoxing, Zhejiang 312000, China
9. Kunshan East Textile Co Ltd  
No 1888 Qianjing West Road, Kunshan Jiangsu 215300, China
10. Peace Korea Co Ltd  
(70 B-2L), 639-1, Gojan-Dong, Namdong-Gu, INCHEON, Incheon 021633, South Korea

## **SPECIAL WOVEN FABRIC – LACE & EMBROIDERY HS 5804,5810**

1. Guangzhou S-Win Textile Co Ltd  
RM 1410-1411, Block B, Sun Yat-sen University Science Park No 135 Xingang West Road,  
Haizhu District, Guangzhou, Guangdong 510275, China 2. Shaoxing County Zi-an Trading Co  
Ltd  
Room 1006-1008, 10/F, Qinye Plaza, Kequao Shaoxing Zhejiang 312030, China 3.  
Zhejiang Huaxing Textile and Garment Co Ltd Economic and Technology Development  
Zone, Shangyu Zhejiang 312300, China
4. Wujiang Pankoo Textile Co Ltd  
B10-12, Blok 10 Shunly Building, No 88 West Second Ring Rd Shengze, Wujiang, Suzhou  
Jiangsu 215228 5. Shaoxing Yetco Textile Co Ltd  
  
No 1 Fengjiang Road, South City, Shaoxing Zhejiang 312000, China 6.  
Zhejiang Yongli Warp Knitting Co Ltd  
Hutang Industrial Area, Shaoxing Zhejiang 312032, China 7.  
Shaoxing Hualong Transfer Printing Co Ltd  
1/F, Building 7, Guangming Textile, Yuzhu Industrial Park Shaoxing, Zhejiang 312030, China
8. Shenzhen Longlida Garment Co Ltd  
A West, 3/F, Liming Building, No 144 Zhingxing Road Luohu District, Shenzhen. Guangdong  
518000 China 9. Inatextile Co Ltd  
  
Room 808, 8/F, Jinhui Building, Keqiao, Shaoxing Zhejiang 312030, China
10. Lace All Korea Co Ltd  
504-7 Ganap-Ri, Gwangjeok-Myeon, Yangju-Gun, Gyeonggi-Do, South Korea, 482-840

## **KNITTED AND HOOKED FABRIC HS 6001-6006**

1. Zhejiang Wogo Knitting and Spinning Science and Technology Co Ltd  
No 7 Kaiyuan Road, Paojiang Industrial Zone, Shaoxing Zhejiang 312000, China
2. Shaoxing Sayuen Textile Co Ltd  
Rm 1701, No 3 SOHO Building, Wanda Plaza, Keqiao Shaoxing, Zhejiang 312030, China
3. Zhjiang Zhongdong Holding Group Co Ltd  
Sixiang Village, Yaqyan Town, Xiaoshan, Hangzou Zhejiang 311209
4. Foshan Perstige Textile Co Ltd  
Building 2, No 70 Jiangti Road, Xialang Langbao Industrial District, Zhangcha, Foshan  
Guangdong 528000, China 5. Group Ally Co Ltd  
  
Room 317, No 1068 Maotai Road, Changning District Shanghai 200336, China
6. Hangzhou Hongfeng Textile Co Ltd  
Yaqian Town, Xiaoshan District, Hangzhou Zhejiang 312900, China
7. Jiangsu Jintai Knitting Co Ltd  
Shaijiabang Industrial Park, Changshu Jiangsu 215559, China 8.  
Marsys Textile Co Ltd  
Room 820, No 333 Jingang Road, Pudong Shanghai 201206, China
9. Zibo Xiangye Cotton Knitted Wear Co Ltd  
No 1897 Xinglu Avenue, Zhoucun, Zibo Shandong 255300, China 10.  
Hansoll Textile Building 268, Songpa-Daero, Songpa-Gu, Seoul, Korea

**Appendix 3.**

Importer Association Name and Address

**1. All-Indonesian National Importers Association (GINSI)**

Wisma Kosgoro, Kav. 53, Jl. MH Thamrin, RT.9/RW.5, Gondangdia, Kec. Menteng, Central Jakarta City, Special Capital Region of Jakarta 10250, telephone: (021) 39832510, [www.ginsidki.com](http://www.ginsidki.com), <https://ginsijateng.com/>

**2. Importir.org**

Address: Green Lake City Ruko Crown Block D No. 17, RT.004/RW.008, Petir, Cipondoh, Tangerang City, Banten 15147, Banten, Telephone: (021) 22302193. <https://importir.org/>